

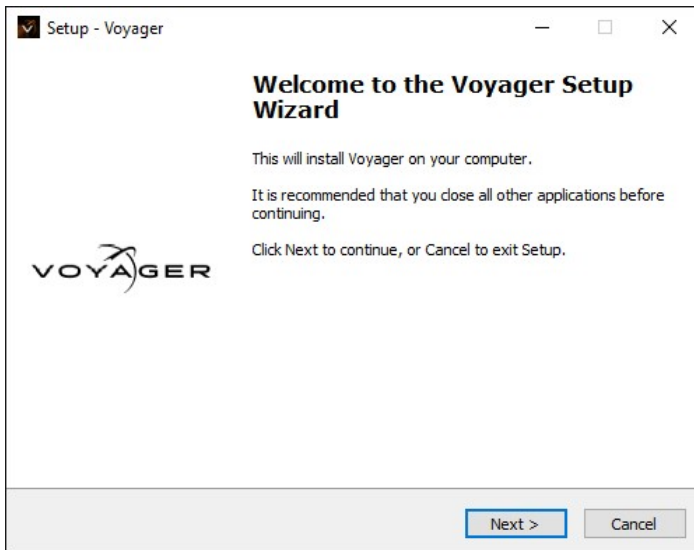
Voyager Installation Guide

This document describes the installation procedure for Voyager software.

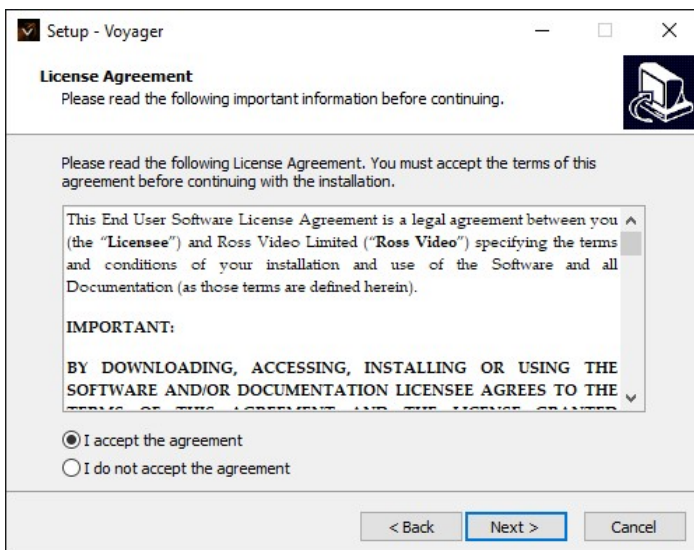
To install Voyager:

1. Double-click the **Voyager-X.x_xxxx.exe** file.

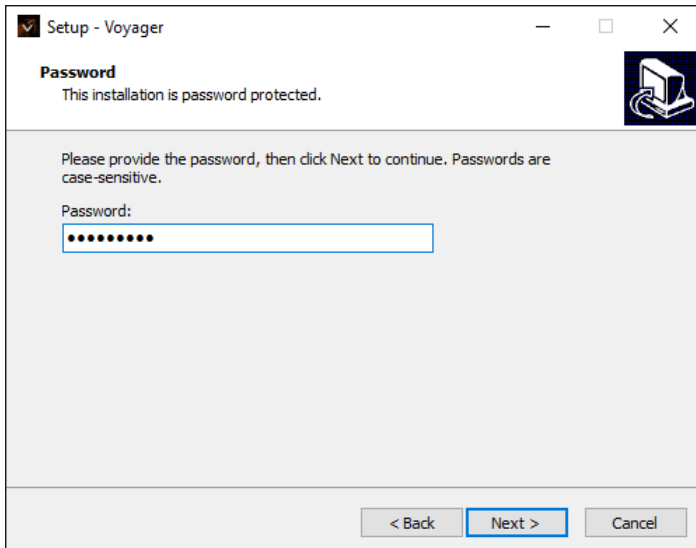
The Voyager **Setup Welcome** page opens.



2. Select **Next** to continue.
3. In the **License Agreement** page, read the license agreement, select **I accept the agreement** to continue the installation and select **Next**.

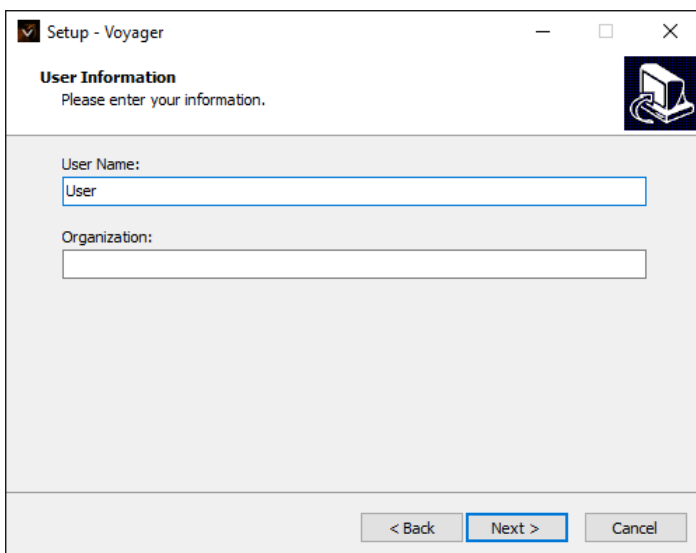


4. In the **Password** field, enter `doinstall` and select **Next**.



The screenshot shows a window titled "Setup - Voyager" with a "Password" section. The text reads: "This installation is password protected." Below this, it says: "Please provide the password, then click Next to continue. Passwords are case-sensitive." There is a "Password:" label followed by a text input field containing ten dots. At the bottom, there are three buttons: "< Back", "Next >" (highlighted with a blue border), and "Cancel".

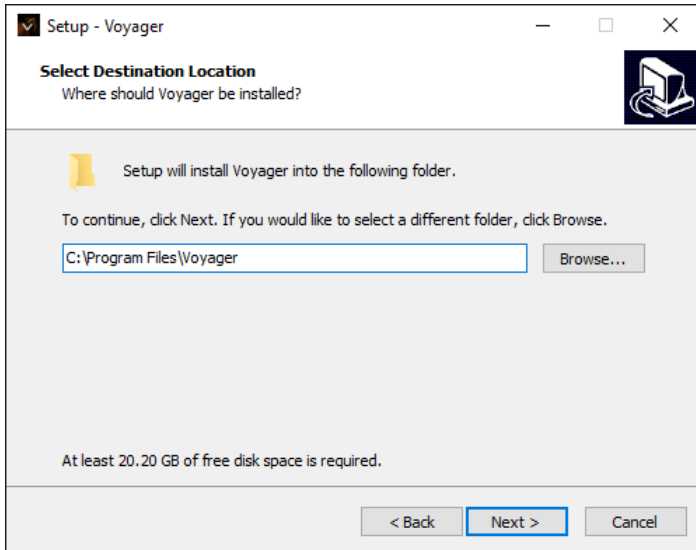
5. In the **User Information** page, enter your **User Name** (required) and **Organization** (optional) and select **Next**.



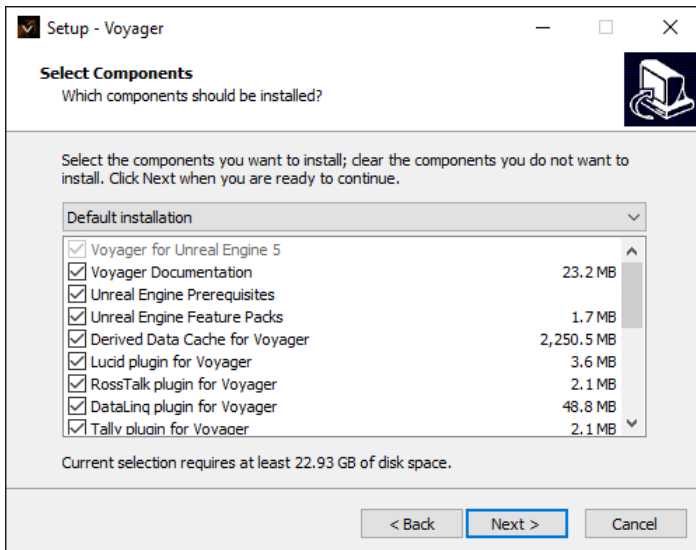
The screenshot shows a window titled "Setup - Voyager" with a "User Information" section. The text reads: "Please enter your information." Below this, there are two input fields: "User Name:" with the text "User" entered, and "Organization:" which is empty. At the bottom, there are three buttons: "< Back", "Next >" (highlighted with a blue border), and "Cancel".

6. In the **Select Destination Location** page, select **Next** to accept the default location for the software or select the **Browse** button to navigate to the folder in which you want to install Voyager and then select **Next**.

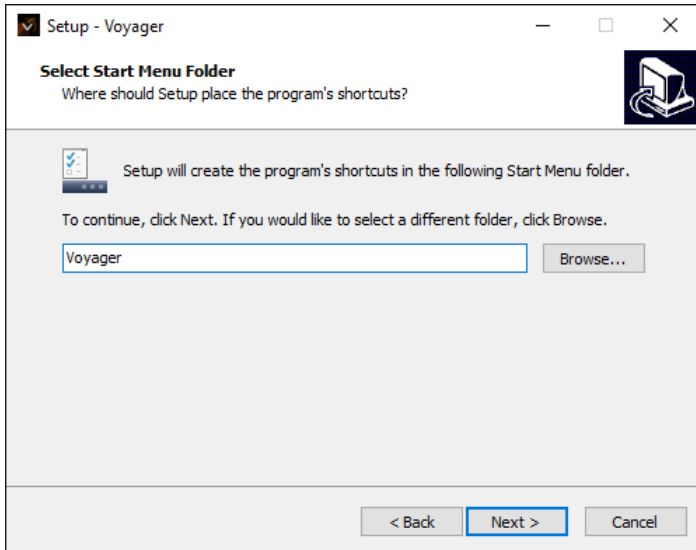
By default, the software is installed to **C:\Program Files\Voyager**.



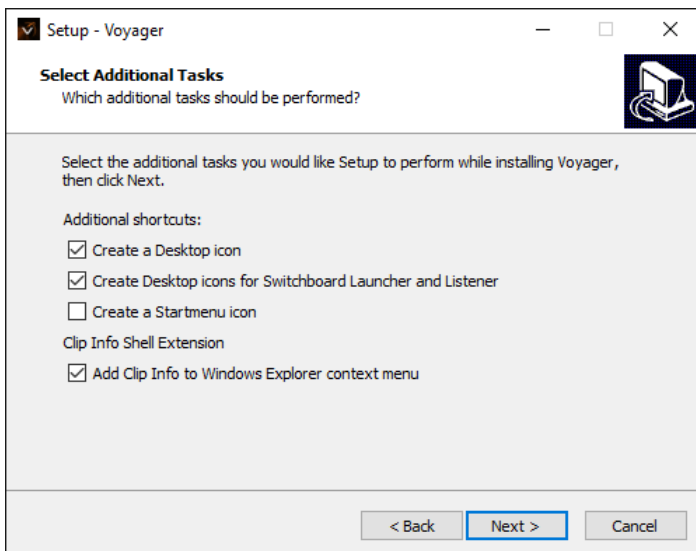
7. In the **Select Components** page, select the checkboxes for the components you want to install and then select **Next**.



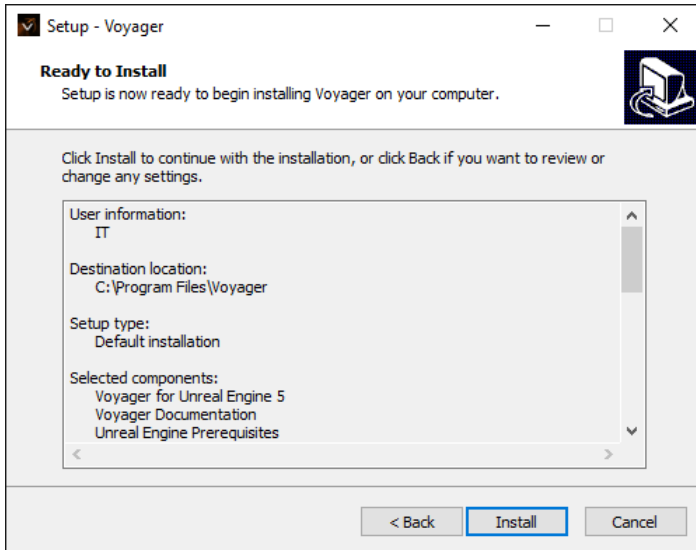
8. In the **Select Start Menu Folder** page, select **Next** to accept the default folder for the program's shortcuts. The default folder is **Voyager**.



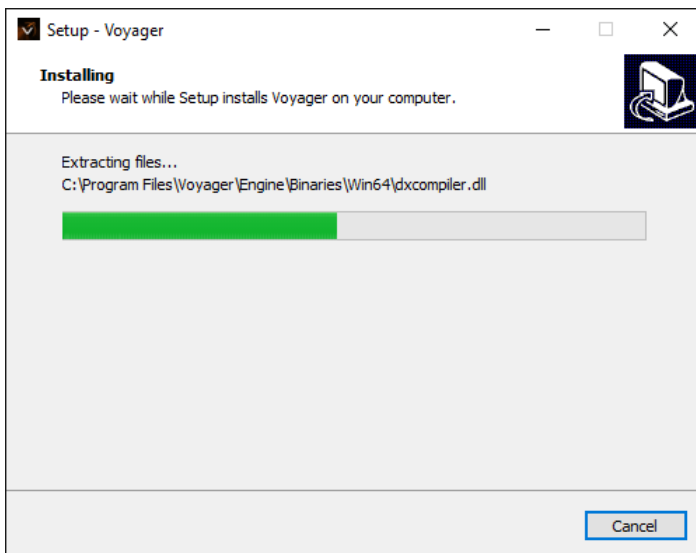
9. In the **Select Additional Tasks** page, select the checkboxes to install additional shortcuts and select **Next**.



10. In the **Ready to Install** page, select **Install** to begin the installation.



The **Installation Progress** page is displayed.



11. In the final page, select the **Show Changes** checkbox if you want to see what's changed in Voyager and then select **Finish** to exit Voyager setup.

