



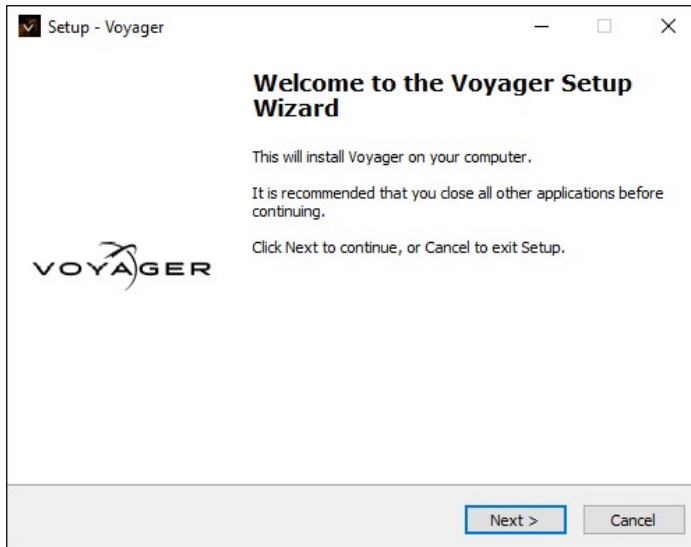
Voyager Installation Guide

This document describes the installation procedure for Voyager software.

To install Voyager:

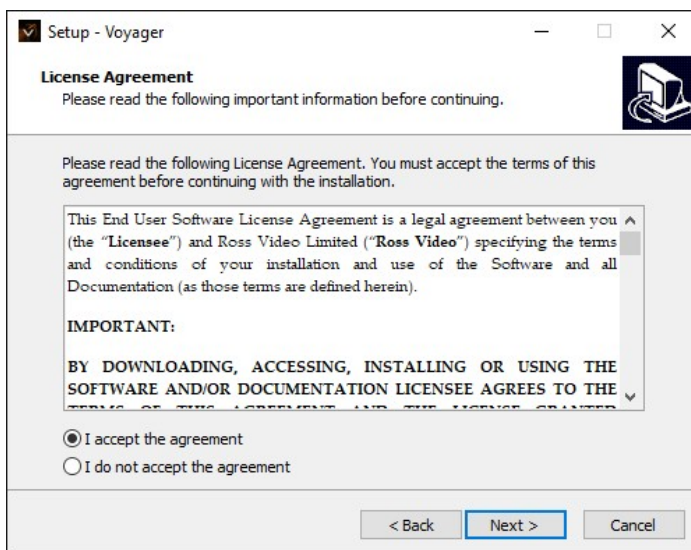
1. Select the **Voyager-X.x_xxxx.exe** file.

The Voyager **Setup Welcome** page opens.



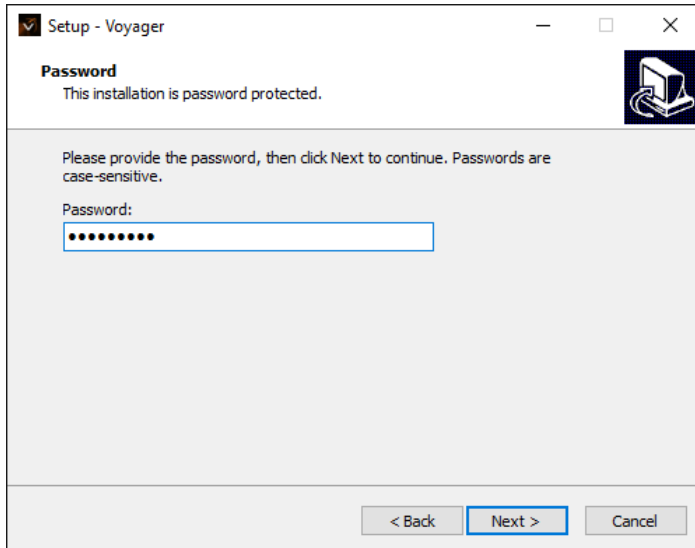
2. Select **Next** to continue.

3. In the **License Agreement** page, read the license agreement, select **I accept the agreement** to continue the installation and select **Next**.



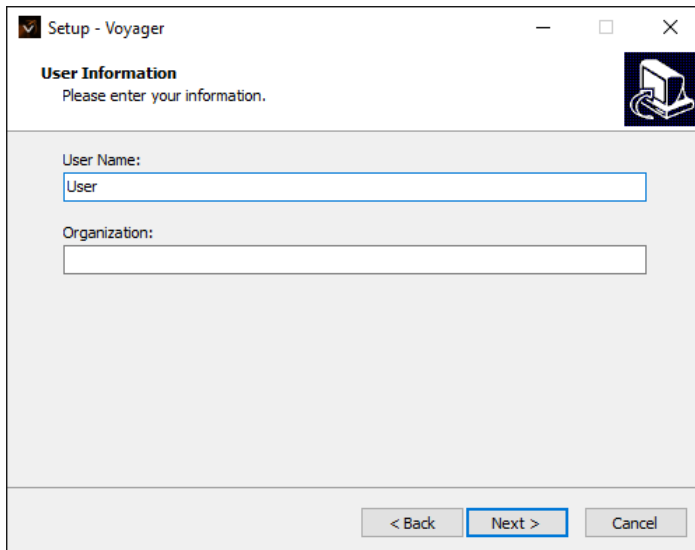


3. In the **Password** field, enter `doinstall` and select **Next**.



The screenshot shows a Windows-style window titled "Setup - Voyager". The main heading is "Password" with a sub-heading "This installation is password protected." Below this, a message reads: "Please provide the password, then click Next to continue. Passwords are case-sensitive." There is a "Password:" label followed by a text input field containing ten black dots. At the bottom of the window, there are three buttons: "< Back", "Next >" (which is highlighted with a blue border), and "Cancel".

4. In the **User Information** page, enter your **User Name** (required) and **Organization** (optional) and select **Next**.

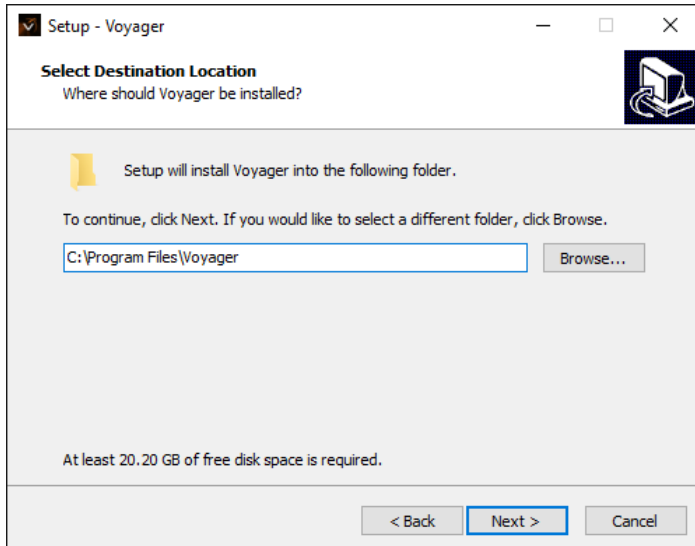


The screenshot shows a Windows-style window titled "Setup - Voyager". The main heading is "User Information" with a sub-heading "Please enter your information." Below this, there are two text input fields. The first is labeled "User Name:" and contains the text "User". The second is labeled "Organization:" and is currently empty. At the bottom of the window, there are three buttons: "< Back", "Next >" (which is highlighted with a blue border), and "Cancel".

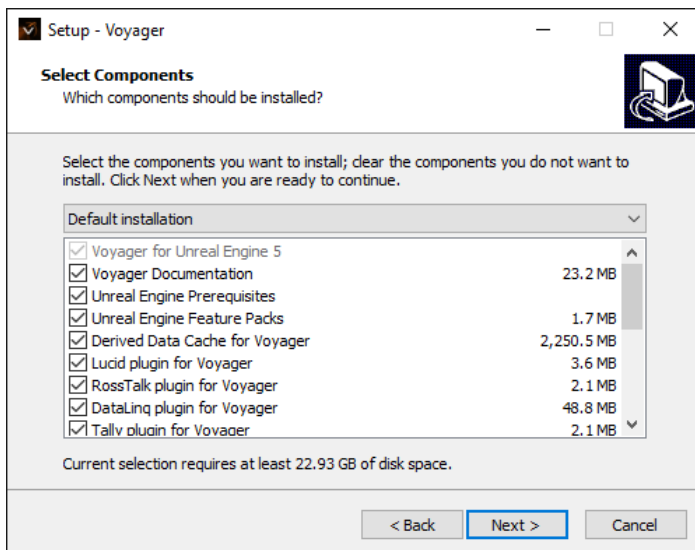


- In the **Select Destination Location** page, select **Next** to accept the default location for the software or select the **Browse** button to navigate to the folder in which you want to install Voyager and then select **Next**.

By default, the software is installed to **C:\Program Files\Voyager**.



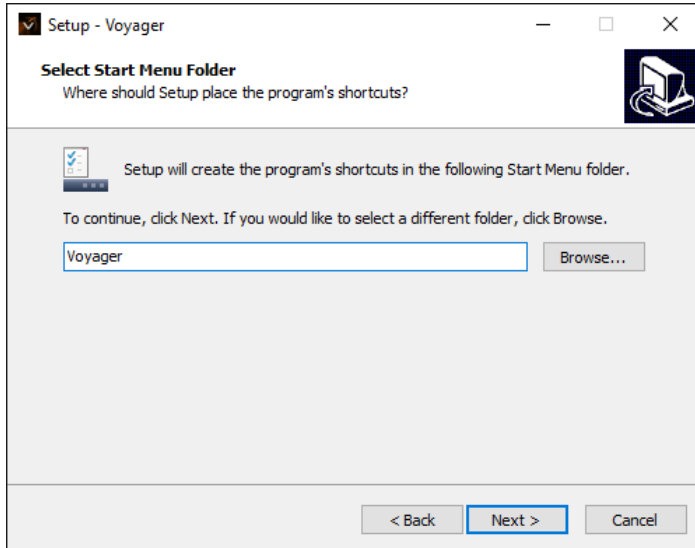
- In the **Select Components** page, select the checkboxes for the components you want to install and then select **Next**.



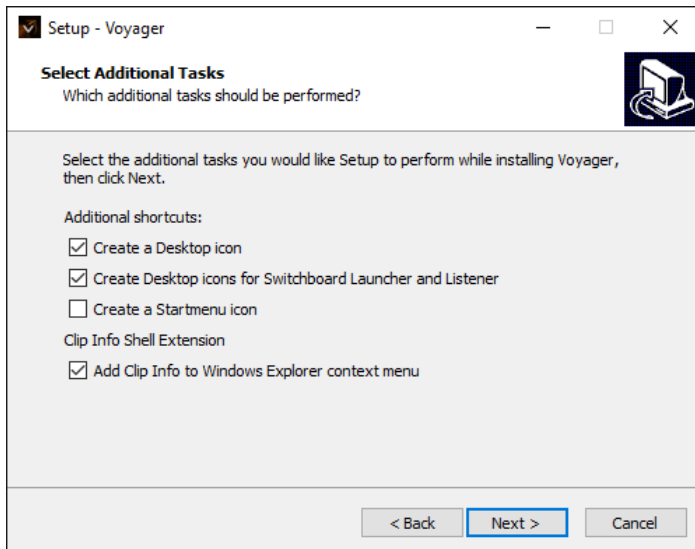


7. In the **Select Start Menu Folder** page, select **Next** to accept the default folder for the program's shortcuts and then select **Next**.

The default folder is **Voyager**.

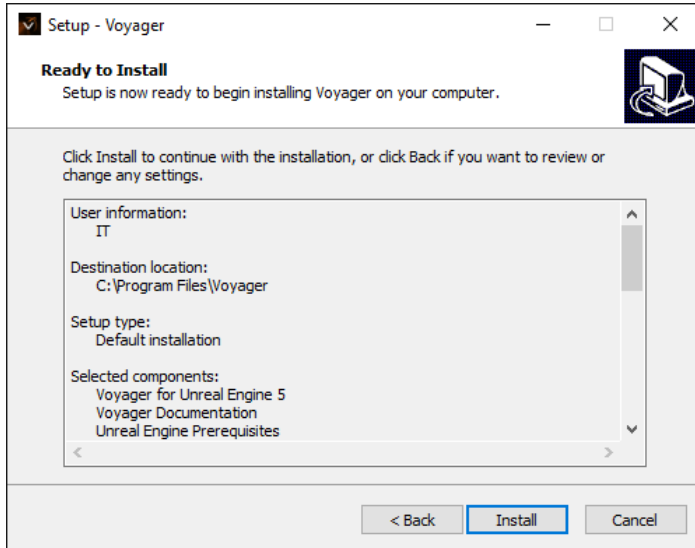


8. In the **Select Additional Tasks** page, select the checkboxes to install additional shortcuts and select **Next**.

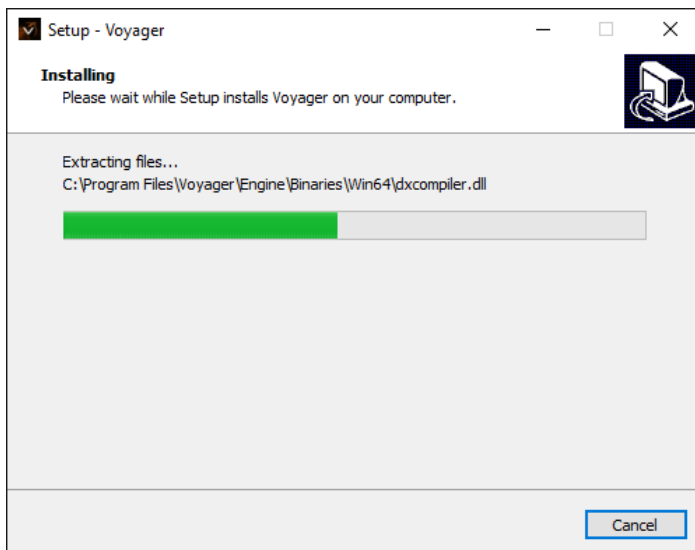




9. In the **Ready to Install** page, select **Install** to begin the installation.



The **Installation Progress** page is displayed.





10. In the final page, select the **Show Changes** checkbox if you want to see what's changed in Voyager and then select **Finish** to exit Voyager setup.

