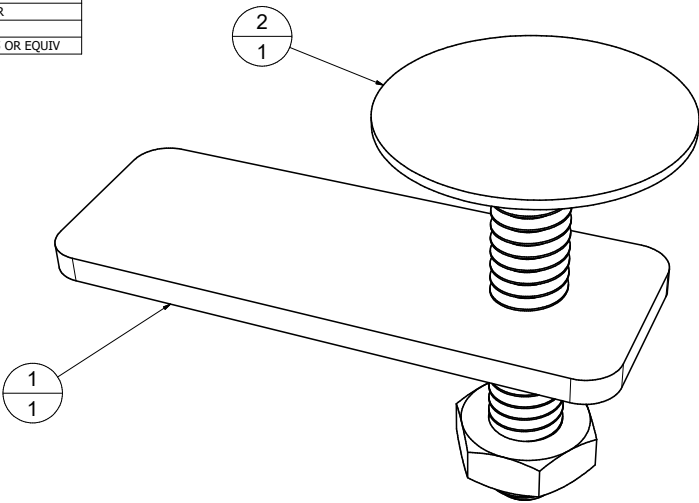


PARTS LIST		
ITEM	QTY	PART NUMBER
1	1	4880FR-652-01
2	1	McMaster Carr #92361A455 OR EQUIV



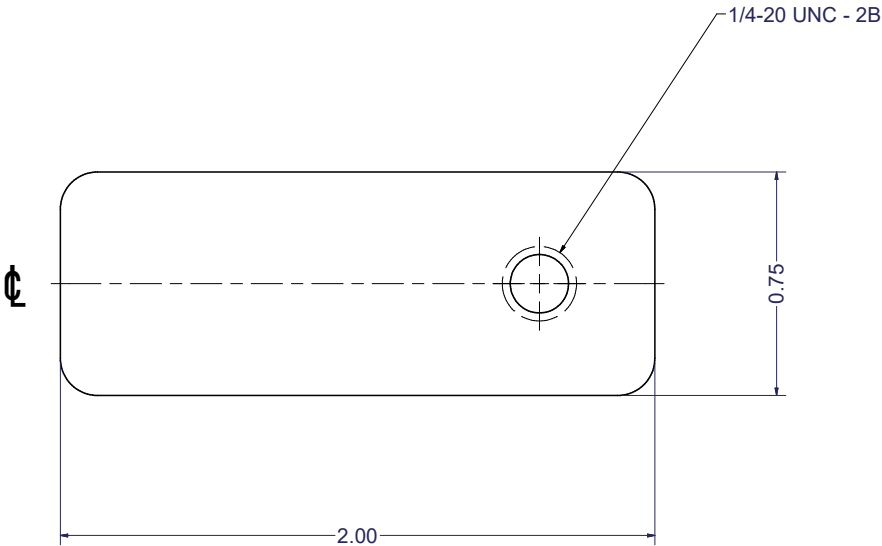
Baloon Legend

Designator
Quantity



REVISION HISTORY

DWG REV	DRAWN DATE	ECO#	DESCRIPTION	SHEET
1	18MAR2019	016376	INITIAL RELEASE	N/A



NOTES;
1 - MATERIAL 0.093THK ALUMINUM 6061-T6
2 - FINISH CLEAR IRIDITE

THIS DRAWING SET IS CONTROLLED BY ROSS VIDEO SPECIFICATION S000-072R MECHANICAL PARTS AND FABRICATIONS STANDARD.
PLEASE REFER TO THIS DOCUMENT FOR DETAILS NOT FOUND WITHIN THIS DRAWING SET AND IMPORTANT INFORMATION REGARDING FABRICATION INSTRUCTIONS.

ALL SHEETS ARE MAINTAINED
AT SAME REVISION LEVEL.

UNLESS OTHERWISE SPECIFIED DIM ARE IN INCHES TOL ON ANGLE = +/- 1° 1X +/- .010 2X +/- .010 INTERPRET DIM AND TOL PER ASME Y14.5-2009		DRAWN Don Locke DESIGN AUTHORITY Don Locke TECHNICAL PRODUCT MANAGER Rob Dockendorff PEER REVIEWED	ROSS VIDEO www.rossvideo.com TITLE FAB, ULTRA INDESK CLAMP
THIRD ANGLE PROJECTION 		ENG APPROVAL	SIZE DWG NO D 4880FR-652-01
This drawing and everything contained therein is confidential permanently to the North Carolina Agreement entered with Ross Video Limited and its subsidiaries and its related companies.			SHEET 1 OF 1

ROSS

DR
1