



## OPTIMIZE YOUR MEDIA CREATIVITY

Primestream is an award-winning asset management platform proven to arm some of the world's top media creatives with the best-in-class solutions to manage all their content. When combined with the rest of Ross' suite of products, it seamlessly integrates file-based workflows with signal-based infrastructures to offer single and multi-site operations global access to their content and workflows.



### DISCOVER YOUR ASSETS

Access all of your production assets and associated metadata in and out of your facility from a single, unified UI, with powerful search capabilities and real-time playback.



### TAG IT FOR LATER

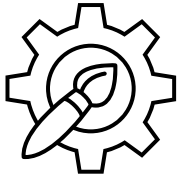
Add markers with descriptive comments and sub-clip video or live feeds to facilitate easy search and retrieval of relevant content.



### ADD FLEXIBILITY

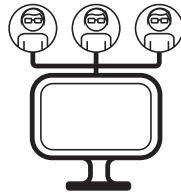
Archive and restore content to local and cloud-based archive solutions from any location and across multiple storage tiers.





### **IMPROVE EFFICIENCY AND CREATIVITY**

Accelerate your entire media production workflow without compromising creativity or quality.



### **EASY USER MANAGEMENT**

Manage large teams easily by delegating roles and managing project-level permissions.



### **FUTURE-PROOF YOUR WORKFLOW**

Work with all major broadcast codecs and file formats together with unparalleled flexibility and proven reliability.

---

## **CREATIVE INTEGRATIONS**

In conjunction with the Primestream MAM, the Creative Integrations are ideal for production studios, postproduction houses, new media operations, content creators, VFX production, corporate teams, creative services ad agencies, educational institutions, sports organizations – anyone or any team engaged in creating professional content.

## **ROUGH CUT EDITING**

Easily gather videos into an organized rough cut while setting in and out points to prepare a creative story for exporting to playback systems or for creative finishing in Adobe premiere directly from a web interface.

## **TIME-BASED LOGGING**

Primestream MAM provides powerful metadata-tagging tools that allow for logging live or pre-recorded video. These tools contain configurable user interfaces that enable content loggers to easily tag video with defined metadata – making assets easier to manage, automate and ultimately monetize.

## **METADATA MANAGEMENT**

Manage all your content with both asset level and project level metadata fields. Metadata can drive both the discovery of assets as well as automate workflows to accelerate productions.

## **CONFIGURABLE WORKFLOWS**

Drive and configure internal video production processes across multiple departments and improve the communication and response time of engineering and support staff.

## **ARCHIVE INTEGRATIONS**

Browse and edit archived assets by proxy and seamlessly restore the high-res file for final output. Primestream integrates your production storage with LTO or object storage solutions for dynamically managing archived content locally or from the Cloud.



RECOMMENDED SERVERS

DATABASE SERVER	MEDIA PROCESSING SERVER
Windows Server 2019 64-bit	Windows Server 2019 64-bit
32GB Memory	64GB Memory
Intel Xeon E-2144G 3.6GHz or higher	Dual Intel Xeon Silver 4214 or higher
2x480GB SSD SATA 6Gbps	2x480GB SSD SATA 6Gbps

EDITIONS

Primestream Standard

10 Web Users  
6 Proxy Render

Primestream Production

30 Web Users  
10 Creative Users  
12 Proxy Render

Primestream Enterprise

50 Web Users  
20 Creative Users  
18 Proxy Render

SOLUTION DIAGRAM

