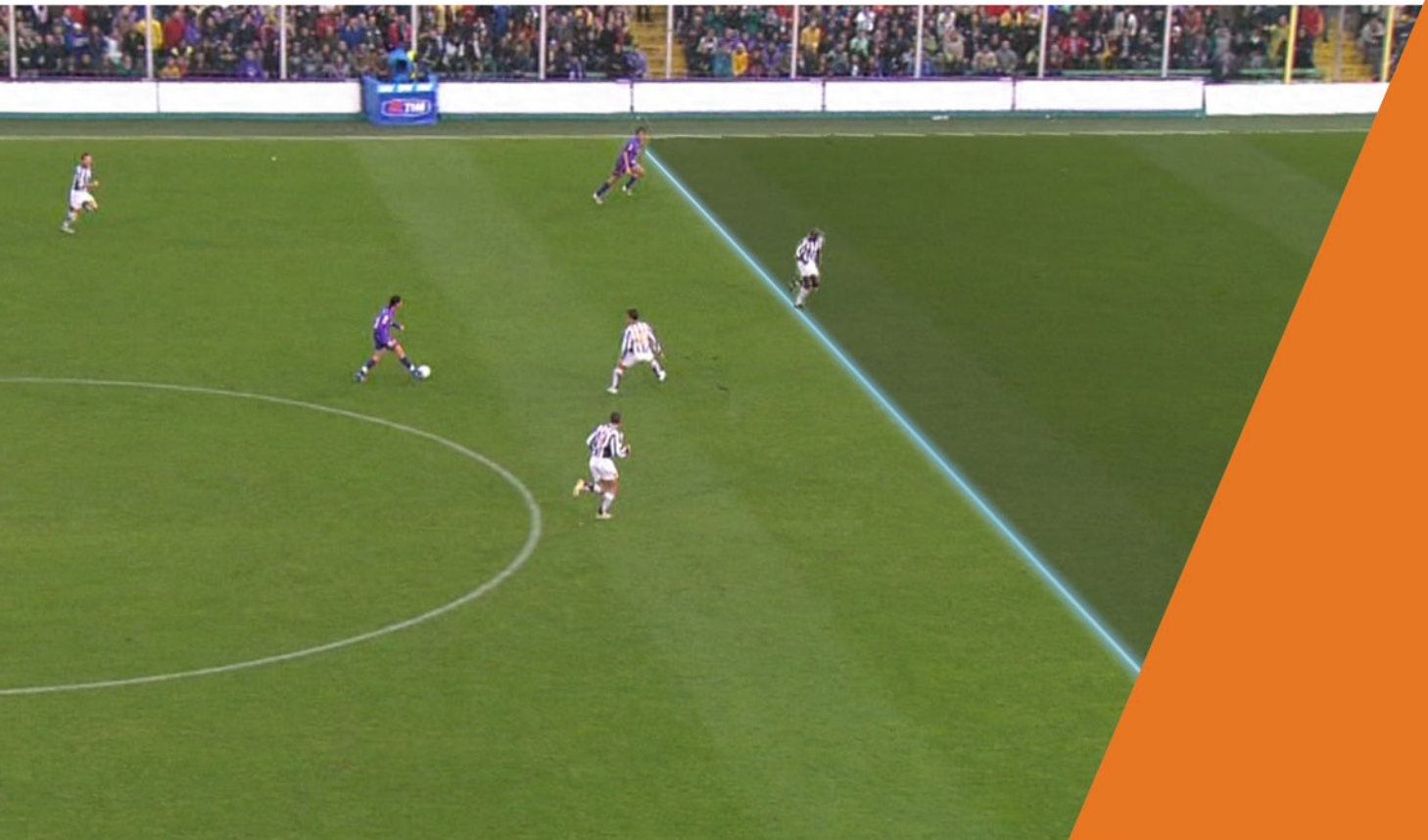
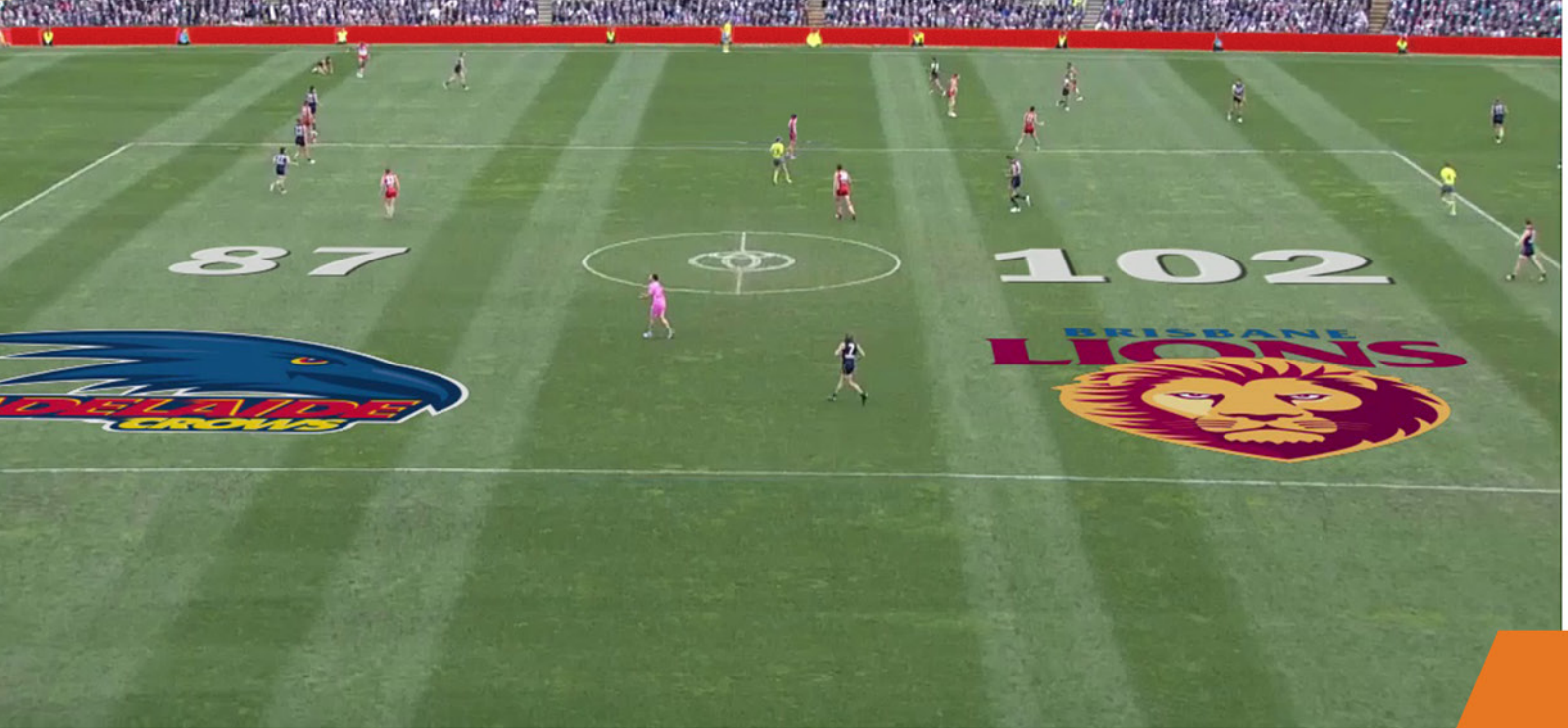


# PIERO<sup>TM</sup>



LIVE



## REAL-TIME LIVE GRAPHICS

### AT A GLANCE

PIERO Live is a real-time graphics system built on an industry-leading sports graphics and analysis engine. Designed for studio applications, the system adds sophisticated data visualizations and augmented reality elements in real time.

### BUILT FOR BROADCAST

PIERO Live was created by broadcasters for broadcasters, and it engages audiences by using groundbreaking graphics and tracking technology to tell a clearer, more compelling story. With the PIERO Touch solution, presenters can interact with the graphics directly using touch screens while live on the air.

### CUTTING-EDGE TECHNOLOGY

All graphics in PIERO Live are applied in real-time using optical tracking or third-party encoded camera solutions. Graphics can be customized freely, and workflow is optimized for speed. Additionally, the system offers full integration with leading third-party data providers.

### SOCCER, RUGBY AND AFL PRODUCTIONS

In Soccer, graphics for offside lines, laser offside walls, free kick circles, and distance to goals can be pushed to air in seconds. For Rugby, try conversions frequently rely on the distance to posts, and AFL productions can take advantage of graphics like mark and kick, live scores, and distance to posts.



# BRINGING DATA TO LIFE

## ADVANCED ANALYSIS

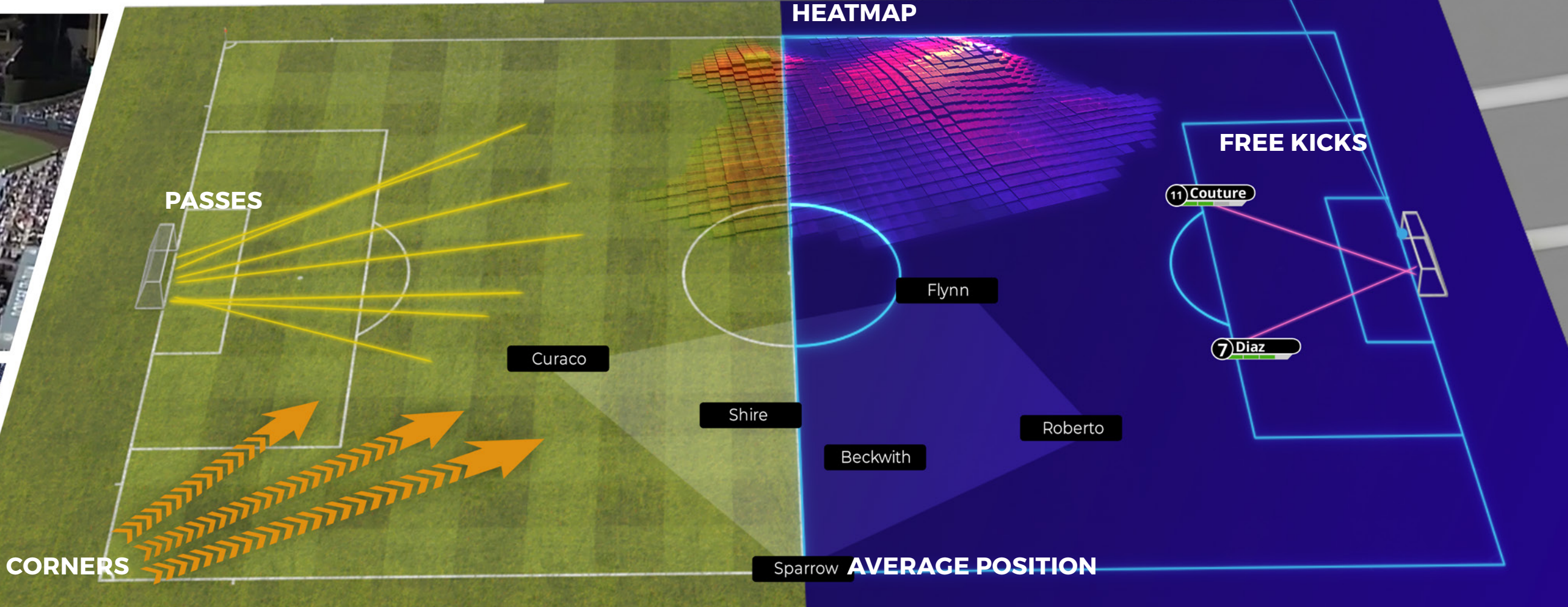
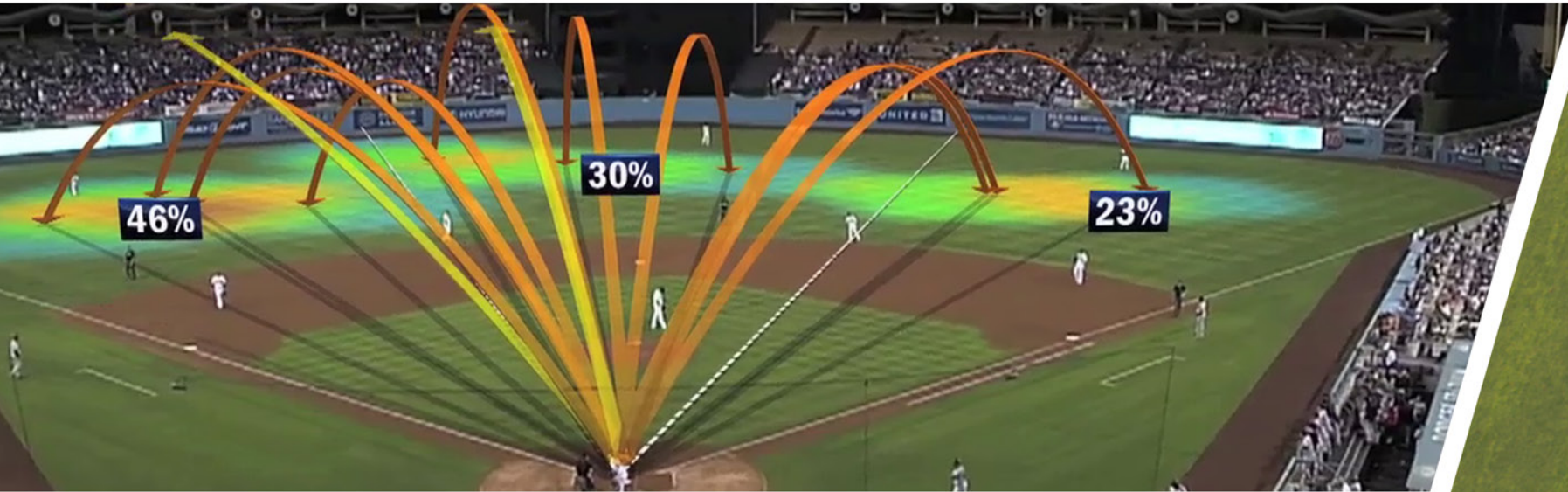
Using PIERO's powerful graphics engine, PIERO Live creates 2D and 3D real-time visualizations in the studio and on top of live footage. The graphics provide rich insights into the patterns of play by teams and individual players, which creates more opportunities for on-air game analysis.

## DATA VISUALIZATION

PIERO Live is compatible with market-leading third-party data providers, including OPTA, TracAB, 2nd Spectrum, STATS and StatCast. Events and live data can be used in real time, in the studio and at the venue. PIERO's remote API is also open to data science teams, and this allows for easy integration of any geo-based data or custom datasets.

## EVENT GRAPHICS

Geo-based event data can be ingested via PIERO's open remote API or using the PIERO Data module for fast data parsing and filtering. Some examples of data-based event graphics include pass maps between players, shots on goal, free kicks, heatmaps, historical shot maps, touch maps, attack profiles, line-outs and corner kicks.







Juventus Attacks

## STUDIO AUGMENTED REALITY

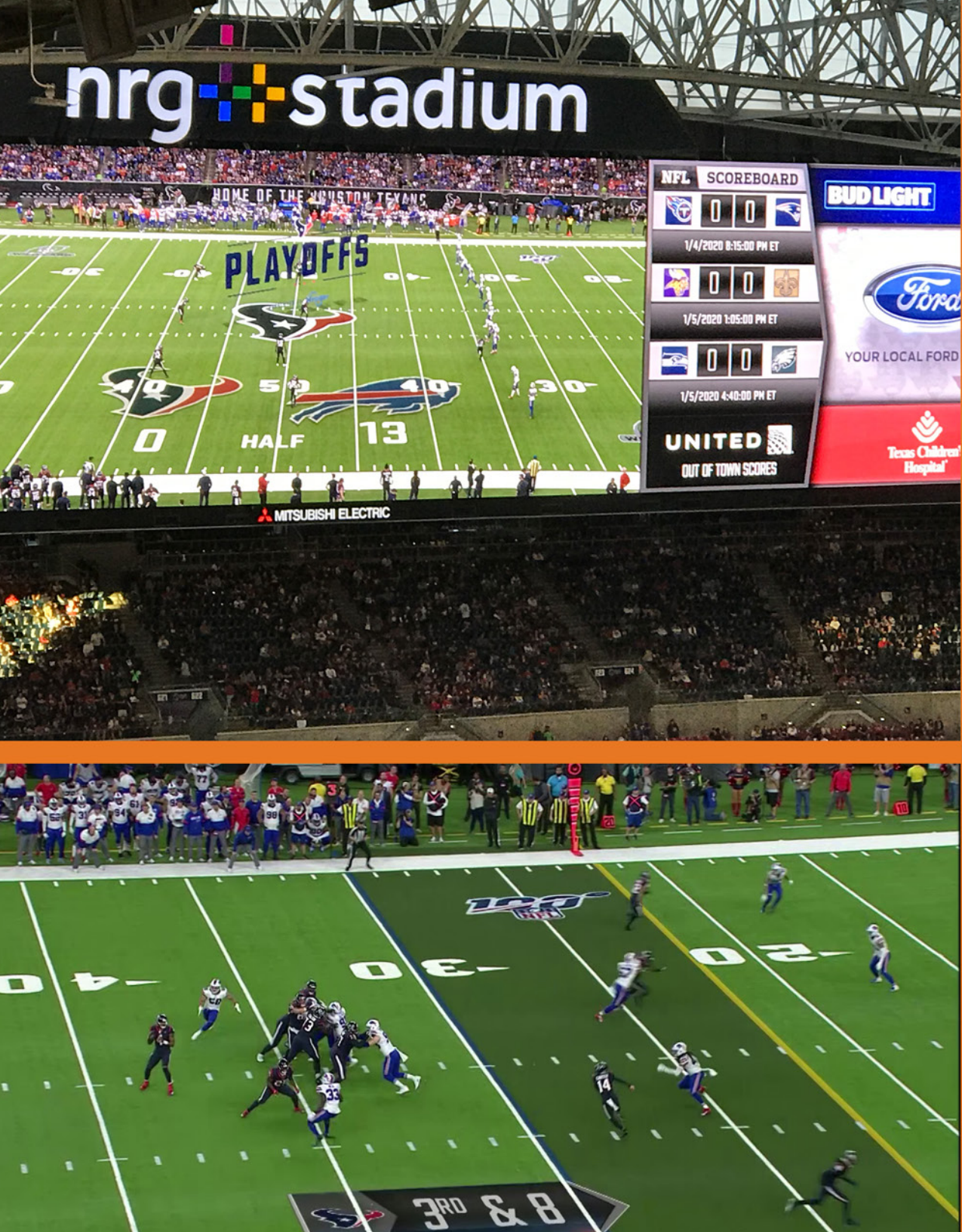
PIERO Live can overlay graphics on the studio floor and on the table in front of presenters. The system's real-time engine allows for live interaction with augmented reality visuals with an iPad or touchscreen.

By displaying data in the studio, this reduces the need to cut to pre-rendered full screen clips. The non-scripted and interactive workflow is reactive to the presenter's analysis.

PIERO Live for Studios requires a third-party mechanical camera head to function. The system offers direct compatibility with NCAM and Stype protocols. Other manufacturers, such as Mo-Sys, Motion Analysis and Furio, are compatible through the Ross UX VCC translation layer.







# DOWN & DISTANCE

**AT A GLANCE**  
PIERO Live offers a broadcast-quality Down & Distance (1st & 10) solution for American Football which supports field crowning, lens distortion and adjustable keying.

The solution works with both optical and mechanical camera tracking and offers an operator workflow that has been engineered for maximum flexibility and simplicity.

Graphics including feather, lines, play clock, 3rd down fill, field goal target line and red zone are easily user-customized and can be tied to existing scoreboard data feeds. Adding graphics for virtual advertising is as simple as importing logo files.

INTERNAL KEYS

3 INPUTS, 1 OUTPUT

GHOST PREVIEW BEFORE EFFECT ANIMATION

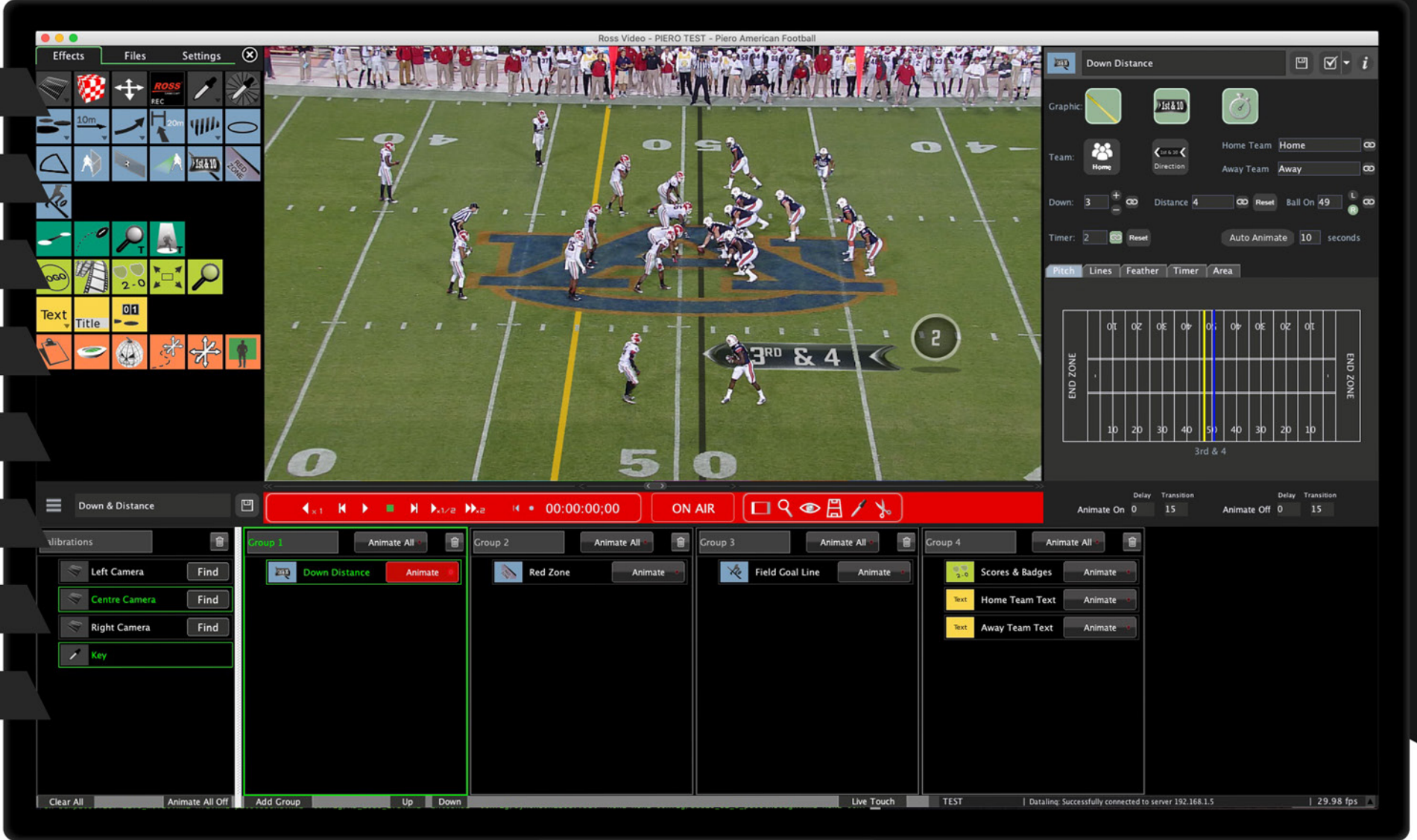
REMOTE INPUT SELECTION VIA THE ROSSTALK PROTOCOL

GROUP ANIMATION

RED ZONE AND FIELD GOAL LINE INSERTION

PLAY CLOCK INSERTION

PITCH CROWN DEFORMATION SUPPORT





# SPECIFICATIONS

PIERO Live operates on a single 2RU server. The system connects to a tracked camera feed over TCP/IP or uses its own optical tracking algorithm to track camera movements. It is UHD capable and burns the effects on the SDI output (no Key and Fill). Third-party data can be accessed from the internet. Data filtering and graphics are controlled by the PC software operator.

# WE PROVIDE

HARDWARE	2RU server with Nvidia Quadro and AJA card running on Linux CentOS. 5+ years product lifecycle.
SOFTWARE	PIERO Live is based upon the PIERO Broadcast engine with Live mode workflow only. It requires a licensed USB dongle to run.
DATA MODULES	Data feed reader and visualization filter. PIERO Live is compatible with OPTA, TracAB, STATS, StatCast, DataLinq, and NextGen. Subscription to data feed not included.

OPTICAL CAMERA TRACKING	This solution offers a 3in 1out up to 12G SDI UHD. The operator controls and renders 1 SDI feed at a time. Camera tracking is based on PIERO internal texture tracking algorithm co-developed with BBC R&D. This solution offer easy deployment, minimum setup time and cost efficiency.
ENCODED CAMERA HEADS	PIERO Live supports NCAM and Stype protocols straight out of the box. Other manufacturers are compatible through Ross Video UX VCC. Using camera heads provide an increased tracking reliability and faster camera selection.

# TYPICAL CONFIGURATION IN THE STUDIO

This diagram shows a typical AR configuration using the Stype camera tracking kit.



# TYPICAL CONFIGURATION IN VENUE





# ROSS VIDEO

## Production Technology and Services

### MOTION GRAPHICS

**XPRESSION** | Single, Triple, UHD Flex, Prime, Go!, Designer, Developer  
**XPRESSION CLIPS**  
**XPRESSION TESSERA**  
**XPRESSION MAPS**  
**XPRESSION TELESTRATE**  
**XPRESSION TOUCH FACTORY**  
**XPRESSION BRAND IT**  
**PIERO** | Sports Analysis Graphics



### CREATIVE SERVICES

**ROCKET SURGERY** | Graphics Creation



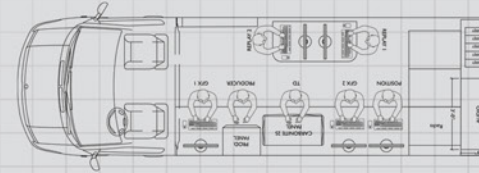
### STUDIO IN A BOX

**GRAPHITE** | All-in-One Live Production Vehicle



### OPENTRUCK

**OPENTRUCK** | Flight Case through 40-foot Truck



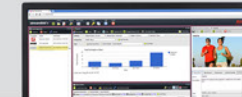
### PRODUCTION SERVICES

**ROSS MOBILE PRODUCTIONS**



### ASSET MANAGEMENT & STORAGE

**STREAMLINE** | Standard, Enterprise, Graphics  
**STREAMLINE.CLOUD**  
**STREAMLINE NEWS VIDEO SUITE** | MAM, Storage & Playback for News  
**EVO** | Networked Storage



### CAMERAS

**ACID CAMERA** | H200-UCHR, Z50-UCHR  
**PIVOTCAM** | PivotCam SE



### MULTI-SCREEN IMAGE PROCESSING

**CARBONITE MOSAIC**



### CHROMA KEYING

**ULTRACHROME HR**



\* Carbonite Black Chassis with UltraChrome HR Software

### INFRASTRUCTURE

**SIGNAL PROCESSING**

**OPENGear** | Modular Signal Processing, OGX Frame  
**MASTER CONTROL** | MC1 openGear Card, MC1 Panel  
**NIELSEN** | Watermarks Encoder  
**GATOR** | 12G UHD Signal Processor  
**RAPTOR EDGE** | IP Gateway & Processor  
**GEARLITE** | Point of Use Signal Processing

**NEWT** | IP Point of Use Gateway  
**MASTER SYNC & REFERENCE** | SRG-2200, SRG-4400, ACO-4400  
**AUDIO MONITORING** | MB 651, MB-652



**CONNECTIVITY**

**ULTRIX 12G & IP ROUTER** | 16x - 144x  
**NK ROUTER** | 16x4 -144x144  
**ULTRITOUCH** | Touch Screen Control  
**ULTRICORE BCS** | Advanced Connectivity System Controller  
**ULTRICORE IP** | IP Controller License for Ultricore BCS  
**PRO-XI** | Workstation Integrator

### NEWS & SOCIAL MEDIA

**INCEPTION NEWS** | Academic, Express, Standard, Enterprise  
**INCEPTION LIVE**  
**INCEPTION SOCIAL**  
**INCEPTION.CLOUD**  
**HORIZON**



### CONTROL SYSTEMS

**OVERDRIVE** | Express, Prime, Premium  
**DASHBOARD** | Facility Control  
**LIGHTNING** | Assembly Control  
**ULTRITOUCH** | Touch Screen Control  
**POWERPLAY** | Event Control System



### IP TECHNOLOGY

**OEM PRODUCTS** | Market Ready Modules & System-on-Chip  
**IGGY** | Bidirectional AES67 & ST2110 to MADI converter  
**BACH** | ST2110 AES67 Audio Networking Module



### VIDEO SERVERS, REPLAY & DELAY

**MIRA+** | Enhanced Replay System  
**TRIA+** | Enhanced Production Server  
**TRIA NEWS** | News Clip Server  
**AIRCLEANER** | Live Events Delay

**MIRA EXPRESS** | Replay System  
**TRIA EXPRESS** | Video Clip Server – new 1080P version



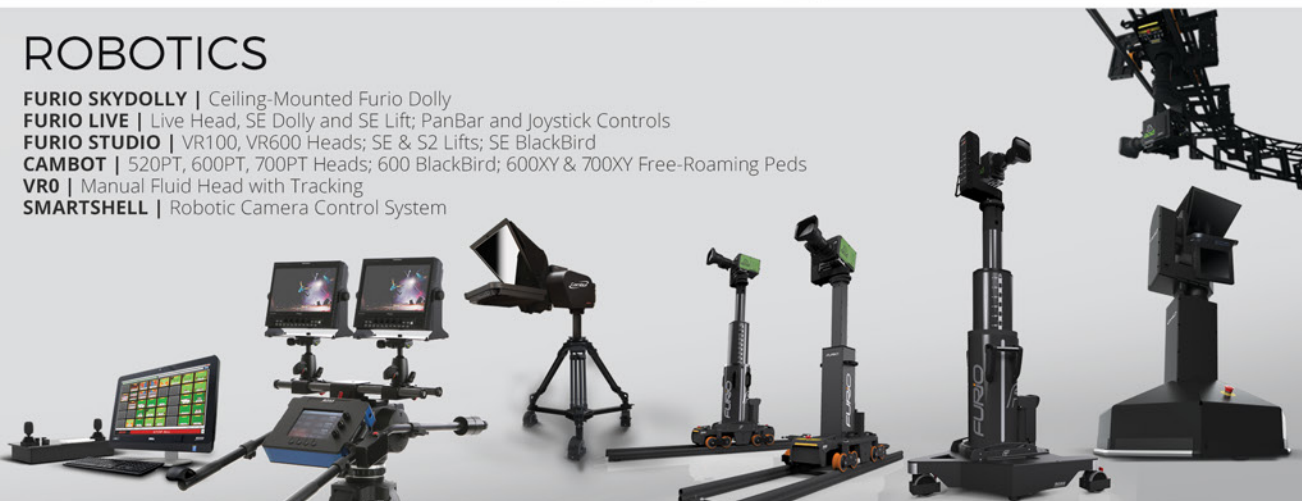
### PRODUCTION SWITCHERS

**ACUITY** | Panel: A1s, A2m, A2x, A3m, A3, A4 Frame: 4RU, 8RU  
**CARBONITE BLACK** | Panel: C1, C1s, C2, C2s, C3s, C3x Frame: 2RU  
**CARBONITE BLACK PLUS**  
**CARBONITE BLACK PLUS 12G**  
**CARBONITE BLACK SOLO**  
**CARBONITE BLACK SOLO 13**  
**CARBONITE ULTRA**  
**ACUITY & CARBONITE IP SOLUTION**



### ROBOTICS

**FURIO SKYDOLLY** | Ceiling-Mounted Furio Dolly  
**FURIO LIVE** | Live Head, SE Dolly and SE Lift; PanBar and Joystick Controls  
**FURIO STUDIO** | VR100, VR600 Heads; SE & S2 Lifts; SE BlackBird  
**CAMBOT** | 520PT, 600PT, 700PT Heads; 600 BlackBird; 600XY & 700XY Free-Roaming Peds  
**VR0** | Manual Fluid Head with Tracking  
**SMARTSHELL** | Robotic Camera Control System



### VIRTUAL & AUGMENTED REALITY

**TRACKLESS VIRTUAL**  
**UX5** | Control System & Workflow  
**VOYAGER** | EPIC Unreal Engine 4  
ARVS Render





# PIERO™ LIVE

Ross Video has a complete range of technical services available to ensure that your PIERO installation is a success.

**Operational Training** can be provided at Ross Video, on-site, or on the web. Experienced Ross operators will teach your staff to get the most out of your new system and enhance your productions.

**Commissioning** is a service to help get your production system properly configured, connected, and installed. This service is performed by factory-trained Ross technical staff.

**Technical Training** can be provided at Ross Video, on-site, or over the web. Technical training will teach your engineering staff the technical details of the system you have purchased. System configuration, interfaces, databases, and routine maintenance procedures are some of the topics covered.

PIERO comes standard with a 1 year comprehensive warranty. Extended Warranties on hardware and software maintenance are available for an annual fee.

Technical advice is available on-line, by telephone, or email to Ross Video – Included for the life of your system.

## Contact Us

Global: +800 1005 0100

North America: 1-844-652-0645

Email: [solutions@rossvideo.com](mailto:solutions@rossvideo.com)

Technical Support

Emergency: +1 613 349-0006

Email: [techsupport@rossvideo.com](mailto:techsupport@rossvideo.com)



[www.rossvideo.com](http://www.rossvideo.com)

## ROSS VIDEO LIVING LIVE!

### SOLUTIONS

Broadcast & Production  
Augmented Reality & Virtual Sets  
Sport & Live Events  
Legislative  
Mobile Production  
House of Worship  
Education  
Corporate

### PRODUCTS

Production Switchers  
Motion Graphics & Clip Servers  
Replay & Production Servers  
Robotic & Camera Systems  
Control Systems  
Routing Infrastructure  
Signal Processing Infrastructure  
News, Live & Social Production Management  
Asset Management & Storage

### SERVICES

Creative Services  
Mobile Production

© 2020 Ross Video Limited

Released in Canada.

No part of this brochure may be reproduced in any form without prior written permission from Ross Video Limited.

This brochure is furnished for informational use only. It is subject to change without notice and should not be construed as commitment by Ross Video Limited. Ross Video Limited assumes no responsibility or liability for errors or inaccuracies that may appear in this brochure.

Piero\_Live\_Brochure\_200317\_a

**ROSS**  
LIVING LIVE!