



# Tell better stories with dynamic maps.

XPression Maps enables video content creators to create immersive and detailed maps to elevate their live video productions.

As a fully customizable design application, XPression Maps allows graphic designers to quickly generate map content that reflects their show's brand.

Finished map content can be exported to video or digital distribution platforms, or to Non-Linear Editing (NLE) systems for integration into editing workflows. With XPression Maps Server for Media Object Server (MOS) workflow integration, journalists can craft more compelling video stories using creative map content, all while maintaining brand consistency.

## Precision maps

Create precise street-level, regional, national, and international map templates using a wide range of sources, including Azure, NASA's Blue Marble Project, and Open Street Maps.

## Create with confidence

Customize your map templates using the colors, fonts, and icons viewers identify with your station or network's brand. OpenStreetMap (OSM) information layers ensure your labels and location are always correct.

## Seamless storytelling

XPression Maps MOS workflow integration empowers journalists to build news segments from their desktops quickly and easily with approved map templates.

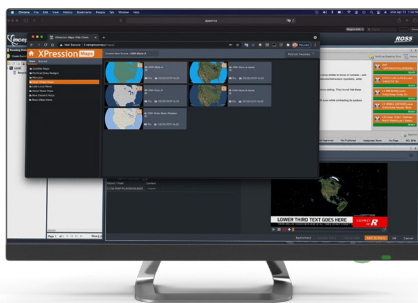
## Getting Started

Developed as a scalable solution, XPression Maps can function as a stand-alone tool or as part of various configurations to meet the evolving demands of today's production environments.



## XPression Maps Designer

Built for the Microsoft Windows operating system, XPression Maps Designer provides a robust interface for designers to create stunning map content using stylized vector-based imagery or aerial satellite imagery. Design and create templates that align with your brand in XPression Maps, then produce a series of world maps, national maps, state maps, city maps, and street-level maps with the required level of detail. Integration with NASA's Blue Marble Project, Microsoft Azure Maps, Mapbox, and OpenStreetMap gives designers access to the latest high-resolution photos and the most accurate data.



## XPression Maps Server

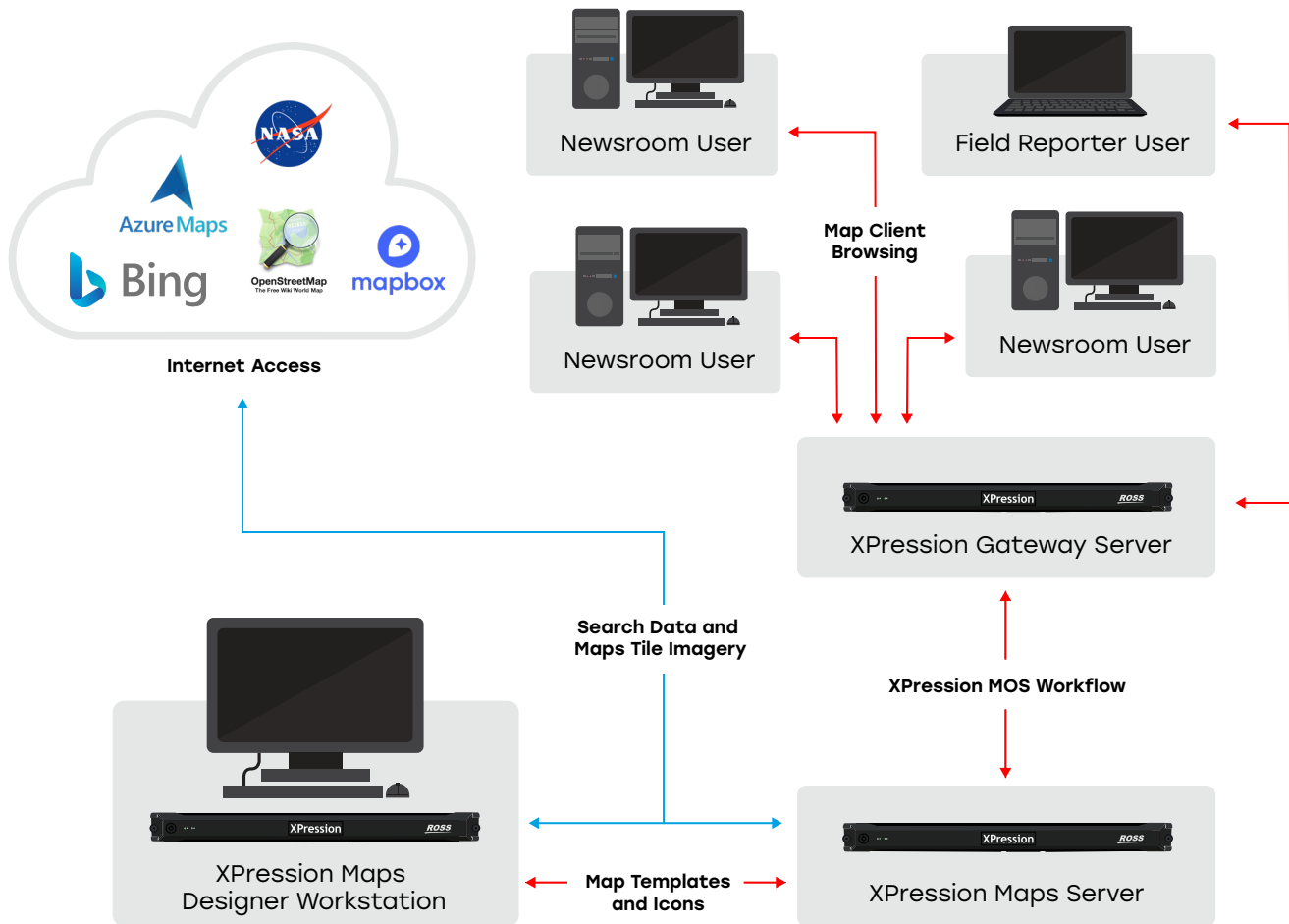
The XPression Maps Server is one of several workflow tools in the XPression product family that make your team more productive. Designed to host a pool of shared map templates for XPression MOS workflows, the XPression Maps Server is also an automated map rendering system for fulfilling map requests from the MOS newsroom.

### XPression Maps in The XPression MOS Workflow

Adding an XPression Maps Server to an XPression MOS workflow enables the entire newsroom to create more of their own maps. As part of a full-service graphics creation process, XPression Maps Server empowers the newsroom users to quickly fulfill their own maps requirements, including:

- Globe Zoom to a Country animation
- Country Zoom to State or Province animation
- State or Province Zoom to City animation
- City Zoom to Street Level animation
- Zoom to Street Level animations

For anything beyond basic Point A to Point B maps, newsroom users can request advanced content from the graphics department to be created on their XPression Maps Designer Workstations.



## XPression Maps Designer and XPression Maps Server Hardware

Both the XPression Maps Server (rack-mounted) and the XPression Maps Designer Workstation (desk-tower) are built on the XPression Maps Workstation hardware.

### XPression Maps Hardware | XPN-HW-CORE-PLUS-V3



## Technical Specifications

Dimensions		Control	
Height	4.3 cm (1.69")	Ethernet	1x RJ-45 1G Ethernet Port 1x RJ-45 10G Ethernet Port
Width	43.8 cm (17.25")	Serial	1x RS-232 Port          2x P/S2 Ports
Depth	65.6 cm (25.8")	GPI	Unlimited RossTalk™ Smart GPI over TCP/IP
Weight		USB	Front Panel - 2x USB 3.1 (Type A)   - 2x USB Type C)  Rear Panel - 2x USB 3.1 (Type A)
Net Weight	12.42 kg (21.6 lbs.)		
Gross Weight When Shipped	12.5 kg (27.6 lbs.)		
Hardware		Included Accessories	
Chassis	1RU Chassis (Rack-mount)	(XPression Workstation) Rackmount Kit	Side rails, handles, and mounting hardware
Power Supply	2x 675W single power supply Voltage Range 100-240 VAC Input Current 3.9A - 7.4A	Keyboard	Standard USB Windows PC Keyboard (US English)
Power Consumption	@115VAC, Idle 83.416W - Max 454.3W	Mouse	USB 2-button mouse
Fan Noise	Between 36dB to 46dB	Security Key Software	Either USB Hardware License or Software-based Product Key provided with software purchased separately
System Drive	465G (2x 500GB 3D NAND 2.5" SSD RAID1)		
Media Drive	3.8TB (2x 4TB 3D NAND 2.5" SSD in RAID1)		
CPU	Intel® Xeon W5-2445, 10-Core, 26.25MB Cache, 2.70GHz, 4.0 GHz Turbo		
Memory	64GB (4x16GB) 4800MT/s DDR5 RDIMM with ECC		
GPU	NVIDIA™ RTX 4000 Ada 20GB GDDR6, 4x Display Port 1.4a Ports		
O/S	Microsoft® Windows® 11 Professional for Workstation		
		<b>Image File Formats</b>	*.tga   *.tif   *.bmp   *.jpg   *.gif   *.png
		<b>Clip File Formats</b>	AVI   MPEG†   QuickTime†   Sequential Images
		<b>Video Formats</b>	480i 29.97Hz (NTSC)   576i 25Hz (PAL)   720p 50Hz   720p 59.94Hz   1080i 25Hz   1080i 29.97Hz   1080p 23.976Hz   1080p 29.97Hz   1080p 50Hz   1080p 59.94Hz   1080p 60Hz   2160p 60Hz   2160p 59.97Hz   2160p 50Hz   2160p 29.97Hz   Custom Formats

**Warranty**  
12-Month System Warranty (parts/labor & software updates)